



We started out by designing a Print and Apply labeling system that we knew needed to be built. This system had to be fast, reliable, configurable, and rugged. It had to have an abundant label supply along with one important feature that most of the market was lacking--a display unit that would offer self-diagnostics, provide informative data, and accept user input. Upon final completion we decided on a name. A name that exemplified speed, ability, and strength. A name that told the competition that their days were numbered--The Panther 2000.

The Panther 2000 is designed to be the most rugged, feature-packed print and apply system in the industry. We have taken no short-cuts in achieving our design goal.

While other manufacturers utilize a sheetmetal box as the base for their system, the Panther 2000 utilizes an aircraft quality 1/2" thick aluminum plate as the back-bone for structural rigidity. We have also incorporated an industrial PLC into our system, rather than a proprietary PC board that is susceptible to damage from harsh environments and power spikes. If you look closely you can see that every step has been taken to ensure that the Panther 2000 is as powerful as it's name implies.



Panther 2000 Print and Apply Labeling System with 8" Pneumatic Tamp Applicator Assembly

Sometimes, it's what you don't see...

If you compare Panther labeling systems with others in the market place, the quality will stand out. All components manufactured by Panther Industries are anodized aluminum or stainless steel. You won't see non-anodized silver parts anywhere on a Panther. You won't see cheap plastic pneumatic connectors. In fact, you will not see "cheap" anywhere on a Panther labeling system.

Once you automate a labeling process, you must demand quality to ensure your operation remains operational. Although we cannot say that we manufacture the least expensive labeling systems in the industry, we take pride in saying that we manufacture systems that are "Engineered to be the best."

What's your view on Performance?



Our Built-In Operator Display is another "off-the-shelf" component that gives you insight into how your Panther system is performing.

Error Reporting with recommended SOLUTION: Not only does the Panther 2000 inform the operator as to what is wrong with the system, but also how to correct the situation. (i.e.: no data downloaded to the printer, loss of air pressure, etc.)

Complete INPUT and OUTPUT Status with detailed descriptions of each I/O point: Get detailed status of all I/O points for the entire system. There is no need for electrical schematics when troubleshooting the Panther 2000.

Machine Configuration for Operating Modes: Datamax, Zebra, Sato, Auto Print and Apply, Batch Mode, Print Then Apply, Error Enabling & Disabling

Printer Status Screen: Displays ALL signals from the print engine and the status of each. The Panther 2000 is the only Printer-Applicator on the market that utilizes ALL of the printer status signals currently available. Ask your salesperson how this will benefit your operation.

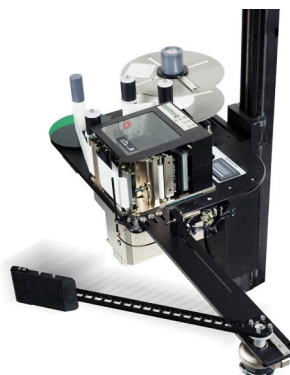
Timer Adjust Screen: Digital Control of timer values for Product Trigger Delay, Applicator Dwell Time, Print Delay, Blow Dwell and more.

Full "Force Print" and "Applicator Cycle" Control via Function Keys: Full Operator Jog Control of both the PRINT and APPLY functions regardless of machine status

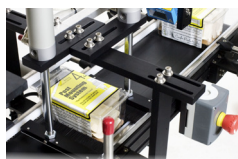
4 Status LEDs in addition to Operator Text: Including Machine Error, Low Label Stock, Low Ribbon, and Auto Print and Apply Mode

Machine Statistics: The built in "Cycle Counter", "Hour Meter", "Current PPM", & "Peak PPM" counters will allow you to track productivity.

This level of feedback and control is unmatched in the labeling industry.



PA-2000-818 Pallet Labeling System



3 Panel Wrap Labeling System

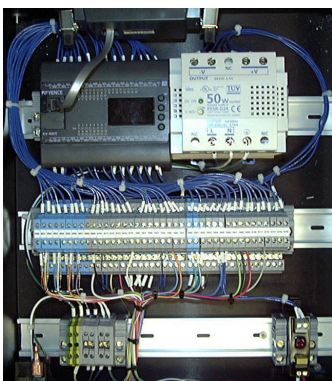


PA-2000-512 Turn-key Corner Wrap System with Conveyor

PANTHER INDUSTRIES, INC.

2703 S. Shoshone St. • Englewood, Colorado 80110
303.703.9876 • 800.530.6018 • 720.283.9462 (fax)
www.print-n-apply.com

ENGINEERED
to be the best



Our control system consists of a 40 I/O point PLC, 24VDC power supply, operator interface, terminal blocks, and one SSR.

Industrial Controls for an Industrial World

Panther Industries is dedicated to providing labeling solutions while utilizing ONLY "off-the-shelf" components. This means 100% INDUSTRIAL controls: No proprietary Controller Boards or Power Supplies that become outdated or can only be purchased through one source. This dedication ensures that our customers will always have access to the replacement components that they need, guaranteeing that their operation is always up and running in even the harshest environments. The Panther 2000 has a programmable and expandable 40 I/O point PLC which allows for controlling external devices such as product stops, reject mechanisms, and hand-shaking with other PLCs through discrete signals. Using this approach allows us to customize the Panther 2000 to meet our customer's exact needs.

Along these same lines, all custom systems produced by Panther Industries are FULLY documented. Nothing leaves our facility without having a mechanical drawing, schematic and bill of materials produced.

Features

Controls:

- No expensive proprietary PC board controller
- 40 I/O point PLC with Operator Display
- System is configurable via operator interface
- High speed twin-rod tamp system
- ALL printer signals are utilized-STANDARD
- Low label detection-STANDARD
- Low ribbon detection-STANDARD
- Printer error monitoring included-STANDARD
- "Off-the-shelf" DIN rail mounted 24VDC 2.0A power supply
- Quick change electrical connections with no hardwiring
- Additional RS-232 port on the PLC for direct PLC communication with a remote host
- Lighted indicators wherever possible to provide feedback
- All 40 I/O points with I/O descriptions shown on operator display-no schematics needed when troubleshooting
- Displays all possible error messages with error recovery help
- Applicator "home" position sensor ensures applicator is home prior to printing a label for faster cycle times
- EPC Gen 2 RFID Available with RFID Print Engine Upgrade

Design:

- Completely Modular System
- OEM Print Engine Design for printer replacement
- Only 3 bolts for quick print engine change-out
- The simplest, most reliable waste take-up system on the market with quick-change "O-ring" belt drive
- Simple label & ribbon loading
- Quick change modular control box
- Easy Access to air solenoids

Construction:

- 1/2" thick, aircraft quality, aluminum "main-plate" for structural rigidity- "Window-Plate" Design
- Anodized aluminum and stainless steel throughout for corrosion resistance
- Only the finest grade industrial components used
- The most rugged system available
- System can be placed in any orientation without the need for additional components or added cost

Pneumatic:

- "Zero-Waste" air consumption when unit is in idle state
- Built in OSHA approved pneumatic shut-off
- Built in filter-regulator unit
- Nickel plated brass quick change press-to-fit air fittings
- High-speed, low pressure pneumatic applicator system

Included:

- Adjustable T-base stand included
- Operation and Maintenance manual with full-color photos
- Distribution CD with PLC programming software included
- "Soft" copy of Panther 2000 manual AND printer manuals
- Customer Satisfaction Guarantee
- One Year Warranty
- Demo CD also includes label printing software and other useful utilities to get your labeling system running ASAP

Specifications

Electrical:

- Input: 115VAC@ 5.0 AMPS 50/60Hz single phase
- Output: 24VDC@ 2.0 AMPS

Pneumatic:

- 40-60 PSI @ 3 CFM (working) 0 CFM (idle)
- OSHA Approved Lockable Shut-off

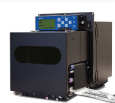
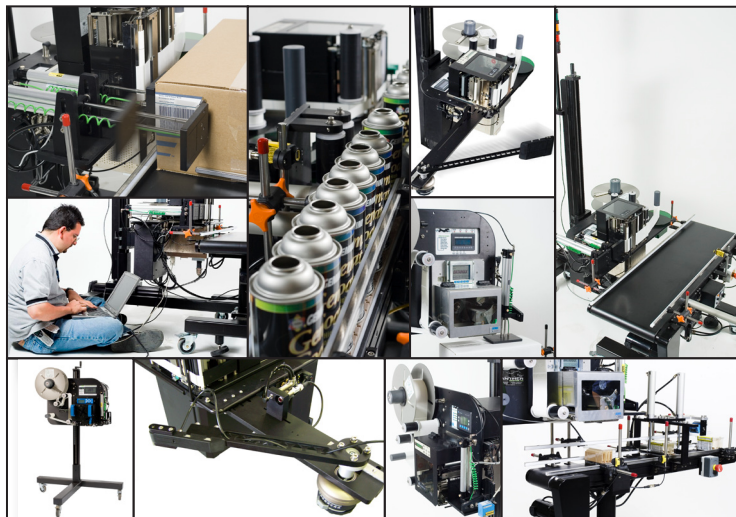
Printer:

- Print Method: Thermal Transfer or Direct Thermal
- Print Width: 6.6" Maximum, .500" Minimum
- Print Length: 14" Maximum
- Print Resolution: 203, 300 & 600 DPI
- Media Supply: 14" O.D. on 3" Core
- Communication: Serial, Parallel, E-Net, Wireless E-net, USB

Applicator:

- Placement Accuracy: Within 1/32"
- Maximum Reach: Up to 24" (Tamp System)
- Speed: 140+ LPM (Determined by label size, label format, and application method)

Size: CAD Drawings Readily Available



PANTHER LABELING SYSTEMS

Built to Run